



## Honda Roundel Emblem Illumination Kit 2018+

This sheet must be read completely to:

1. Provide assistance/clarification to the installer, customer, end user or others.
2. Avoid causing injury or death to installer, customer, end user, or others.
3. Prevent damage to vehicle and/or accessory or other.

HEY YOU! Please, please, please read the instructions completely prior to installation. 90% of questions we receive could be answered simply by reading ALL the instructions before installing anything. If you have any question or problem during the installation, please contact us as necessary. Phone support will always provide the quickest response.

You can thank the lawyers for this next bit of fun. With that said, lets go!

Installer: Pretty please, give this sheet to the customer after reading it.

It is virtually impossible for us to be able to address every possible situation an installer or user will encounter. This requires both to exercise due diligence and to apply some level of common sense. AKA...no 'hold my beer and watch this' type stuff.

Important Information in our instructions will be provided in the following manner:

SHOP TIP: literally great info we have gathered from hands-on installs or customer feedback.

NOTE: important information regarding the installation. Pay attention.

CAUTION: failure to follow instructions could result in damage to vehicle and/or accessory. Really pay attention.

WARNING: failure to follow instructions could result in injury/death of operator and/or passenger/others. For Pete's sake, PAY ATTENTION!

NOTE:

1. "Left", "Right", "Front" and "Rear" are described from the seated position of the vehicle. Vroom vroom.
2. Check local laws regarding the use of auxiliary lighting and electronics. Don't be 'that guy'.
3. Use of owners manual or service manual is recommended for installation. Sorry...more reading.
4. If so equipped, place motorcycle on it's centerstand on solid, level ground or engage parking brake. Do it like Mom is watching.

CAUTION:

1. When adding electrical accessories, always disconnect the battery and properly fuse new electronics.
2. DO NOT let the smoke out of the part. All electronics operate on smoke....when released, electronics are dead.

WARNING:

1. Allow the vehicle to cool prior to installation & when operating engine, allow adequate ventilation. Yep.
2. NEVER modify the kit in ANY manner. Doing so voids warranty and places all liability on the installer and/or user. Nope.
3. Never route wires or install components that interfere with the operation of the steering, suspension, brake/clutch/gas lever/pedal/grip or any other operational function of the vehicle. Duh.
4. Never allow your accessories to cause distractions to remove your focus off the vehicles operation.  
Never forget that this is a high risk sport - don't make it a higher risk when you don't have to. Major duh.
5. Never allow your accessories to cause distractions to others on the road. Super sized duh.

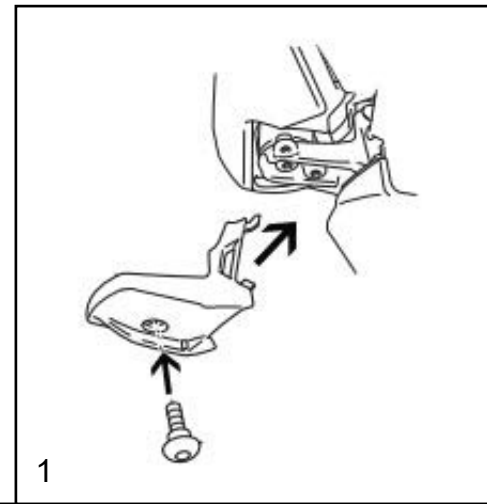
### Part Listing

- 2 roundel backlighting plate
- 6 red posi-tap
- 2 extension cable
- 1 surface prep kit

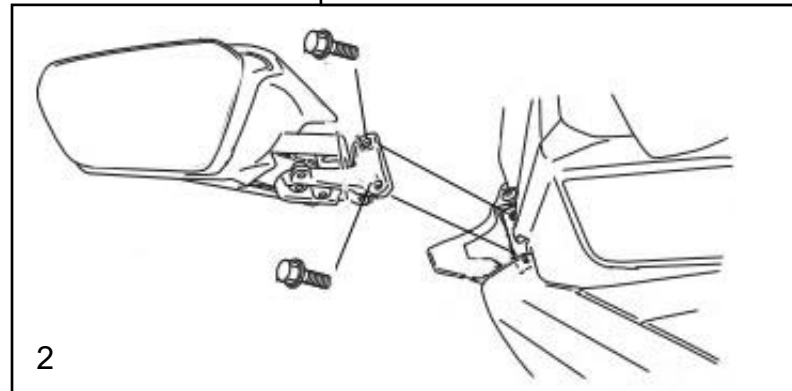
### Tools / Supplies Required

- pick probe and/or plastic pry tools
- heat gun or hair dryer
- round file
- masking tape
- claw tool or long wire tie.

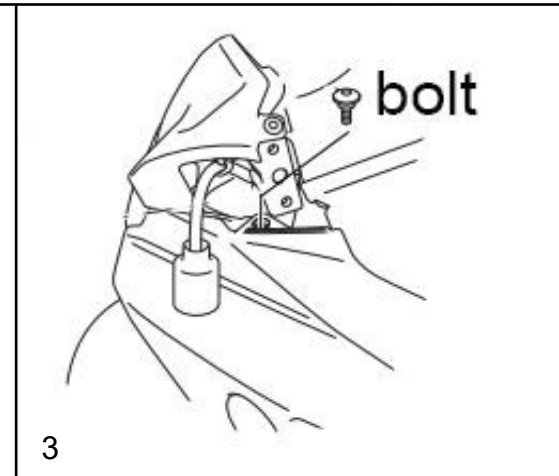
1. Remove the mirror bottom cover. It's held in place by one allen head screw. Once the screw is removed, open the mirror by pushing it forward. Then slide the cover down. Note the 2 tabs and slots where it engages the dash. See picture 1.



2. With the cover removed, you have exposed the 2 bolts that hold the mirror in place. Using your 8mm socket, remove the 2 bolts. Be sure to support the mirror when removing the second bolt so that your mirror does not fall. See picture 2

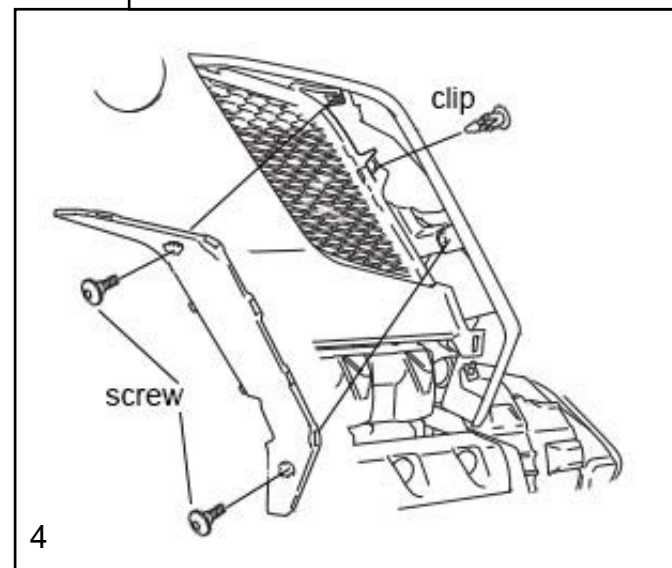


3. Disconnect the mirror. Pull the wiring all the way out of the bike. Push the rubber boot back to expose the connector. Depress the tab and pull the 2 connectors apart.

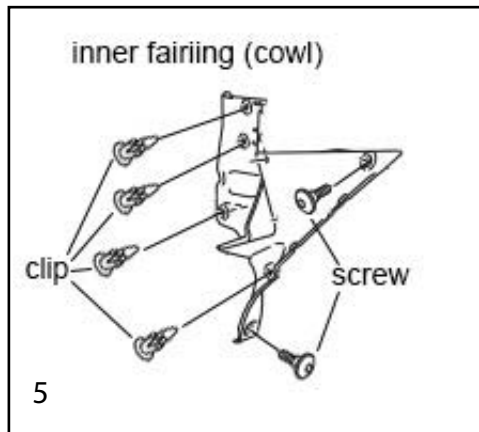


Note: to remove the clips from the next several steps, use your 90 degree pick to to press in the center of the clips  
Once it's pushed in, it can be removed.

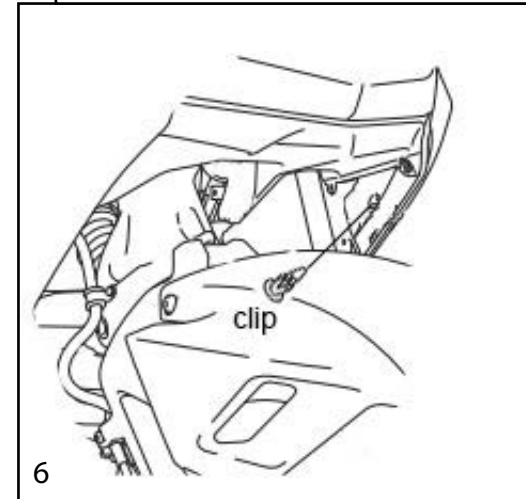
4. Remove the outer air deflector. This is the piece held in place by two screws as shown in pic 4. Once the screws are removed, you will need to gently pry / twist the panel out from it's location. Note that there are tabs on the outer edge, the inner edge and one large locating tab on the backside of the deflector. That large tab will have to be engaged first when reassembling the panel.



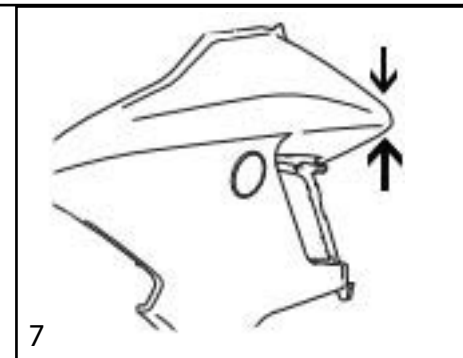
5. Remove inner fairing cowl. This panel is held in place by 2 screws and 5 clips as shown in pic 5.



6. Remove the clip from the inside of the fairing that holds the outer fairing panel in place as shown in pic 6.



7. Remove outer fairing panel. Pull at the point indicated by the arrows in pic 7. This will release the tabs inserted into the grommets at the rear. Once they are free, gently push the panel towards the front of the bike to disengage the tabs at the headlight.



Caution: do not install this kit if the temperature is below 75 degrees. You must use a heat gun or hair dryer to warm the surface for installation. You must also use the supplied surface prep. Failure to follow these steps will cause the emblem to not adhere to the motorcycle. *Repeat each step for both sides at the same time.*

8. Remove emblems from bike.

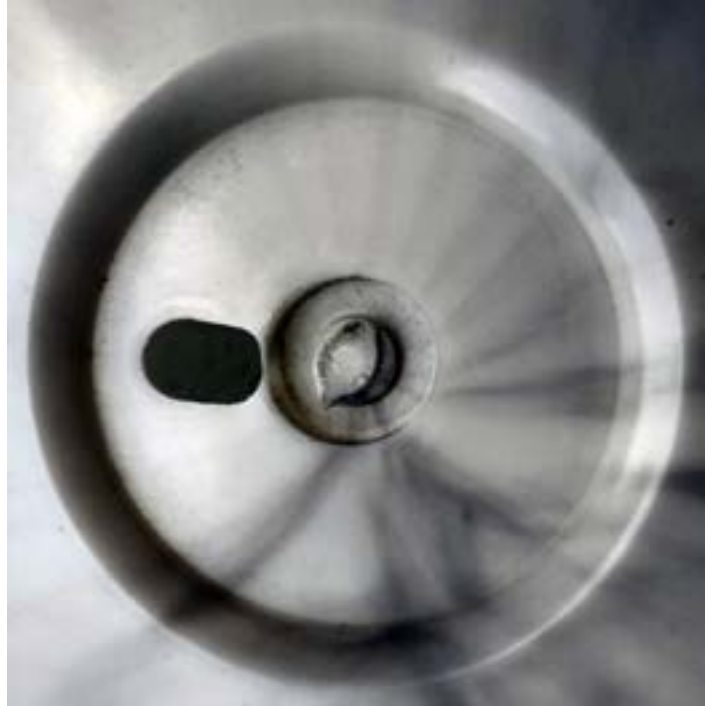
Place masking tape around the emblem on the surrounding plastic. Using a heat gun or hair dryer, warm the emblem up. Use a small hook to pull against the back of the emblem. Once you get the double sided tape broken, use an additional hook or plastic pry tool to remove the emblem.

9. Prep emblem.

Remove *\*ALL\** old tape from the bike and the back of the emblem.

10. Elongate the holes.

The wire exit for the roundel unfortunately does not line up with the existing hole, so use your round file to mod the holes as shown. Before to the left, and what your bike needs to look like after on the right picture.



11. Prep the fairing body & emblem.

Using the supplied surface prep and wipe down the plastic where you removed the emblem. Also wipe the back of the emblem. Allow to dry.

12. Mount illumination base.

Connect the extension wire to the light. Adding heat shrink or tape can help you avoid pulling them apart should you place too much force on the wires when running them. Index the base so that the wire goes out through the hole. The LED will be facing out. Warm the plastic if needed. Remove backing and stick to fairing.

13. Mount emblem.

Remove the backing off the double sided tape that the emblem will be stuck to. Be careful not to touch the back of the emblem. Warm the plastic if needed. Stick the emblem to the illumination base.

14. Run wiring.

Place the fairing up against the bike where the light will end up. Note the amount of wire coming off the roundel light and where the connector will be. We like to place them on top of the 'AIR GUIDE' around the radiator. Using your claw tool or long wire tie, pull the extension cable from under the seat to the cavity area towards the rear of the area exposed by removing the fairing panel. Then pull the cable forward to where you noted the connector will end up.

15. Connect wires.

If you have the EZ Distribution System, simply remove a yellow cover from the flower head on both left and right side. Plug the extension cable into the flower head.

If you have another brand of isolation, use the optional 'pigtails' to connect them to your isolator.

Black - ground. White - tail light. Red - turn signal.

16. Complete install.

Turn key on and test lights. The emblem will come on white when the running light is on, then switch to amber once the turn signal is activated.

17. Reinstall the outer fairing panels. Note you will need to insert the round tab on the front of the panel first. Then slide the clips from the panel into the tabs on the side of the headlight. If the panel is not flush against the headlight, it is not installed correctly. It may take several attempts. Once flush, push the rear of the panel shown by the arrows in pic 7 to engage the pins.

18. Insert the clips shown in pics 4 & 5. Then reinstall the outer air deflector in pic 4 by engaging the large tab on the rear of the panel first. Then twist the panel to engage the tabs on the outer edge. You may have to push the panel in to engage the inner tabs.

19. Reinstall the inner fairing cowl from pic 5. Then reinstall the mirror making sure you connect the light and slide the rubber boot back over the connector. Once the mirror is in place, reinstall the mirror bottom cover. .