



Honda Goldwing/Tour Fog Light Kit

This sheet must be read completely to:

1. Provide assistance/clarification to the installer, customer, end user or others.
2. Avoid causing injury or death to installer, customer, end user, or others.
3. Prevent damage to vehicle and/or accessory or other.

HEY YOU! Please, please, please read the instructions completely prior to installation. 90% of questions we receive could be answered simply by reading ALL the instructions before installing anything. If you have any question or problem during the installation, please contact us as necessary. Phone support will always provide the quickest response. Installation of this product implies your agreement with our sales, warranty, exchange and return policies found on our website.

You can thank the lawyers for this next bit of fun. With that said, lets go!

Installer: Pretty please, give this sheet to the customer after reading it.

It is virtually impossible for us to be able to address every possible situation an installer or user will encounter. This requires both to exercise due diligence and to apply some level of common sense. AKA...no 'hold my beer and watch this' type stuff.

Important Information in our instructions will be provided in the following manner:

SHOP TIP: literally great info we have gathered from hands-on installs or customer feedback.

NOTE: important information regarding the installation. Pay attention.

CAUTION: failure to follow instructions could result in damage to vehicle and/or accessory. Really pay attention.

WARNING: failure to follow instructions could result in injury/death of operator and/or passenger/others. For Pete's sake, PAY ATTENTION!

NOTE:

1. "Left", "Right", "Front" and "Rear" are described from the seated position of the vehicle. Vroom vroom.
2. Check local laws regarding the use of auxiliary lighting and electronics. Don't be 'that guy'.
3. Use of owners manual or service manual is recommended for installation. Sorry....more reading.
4. If so equipped, place motorcycle on it's centerstand on solid, level ground or engage parking brake. Do it like Mom is watching.

CAUTION:

1. When adding electrical accessories, always disconnect the battery and properly fuse new electronics.
2. DO NOT let the smoke out of the part. All electronics operate on smoke....when released, electronics are dead.

WARNING:

1. Allow the vehicle to cool prior to installation & when operating engine, allow adequate ventilation. Yep.
2. NEVER modify the kit in ANY manner. Doing so voids warranty and places all liability on the installer and/or user. Nope.
3. Never route wires or install components that interfere with the operation of the steering, suspension, brake/clutch/gas lever/pedal/grip or any other operational function of the vehicle. Duh.
4. Never allow your accessories to cause distractions to remove your focus off the vehicles operation. Never forget that this is a high risk sport - don't make it a higher risk when you don't have to. Major duh.
5. Never allow your accessories to cause distractions to others on the road. Super sized duh.

Part Listing

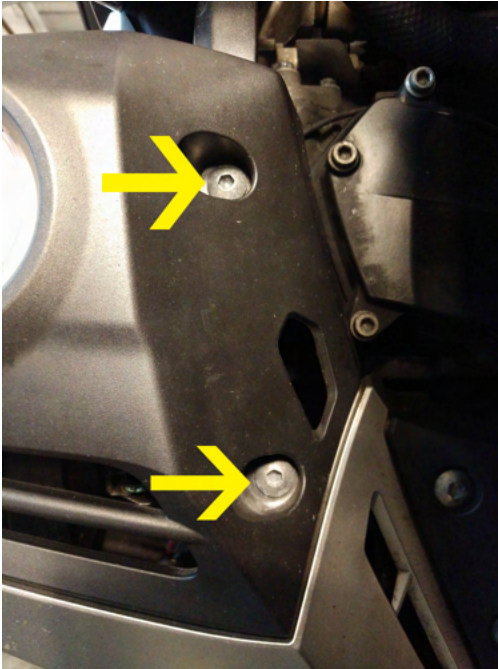
- 2 light housing
- 1 harness
- 1 switch
- 2 spacer - 5/8 OD x .257 ID x 7/16
- 2 spacer - 5/8 OD x .257 ID x 11/16
- 2 bolt - 6mm x 16mm
- 2 bolt - 6mm x 25mm
- 2 bolt - 6mm x 30mm
- 2 nut - 6mm nylock
- 8 flat washer - 6mm
- 4 lock washer - 6mm
- 4 wire tie - 6"

Tools / Supplies Required

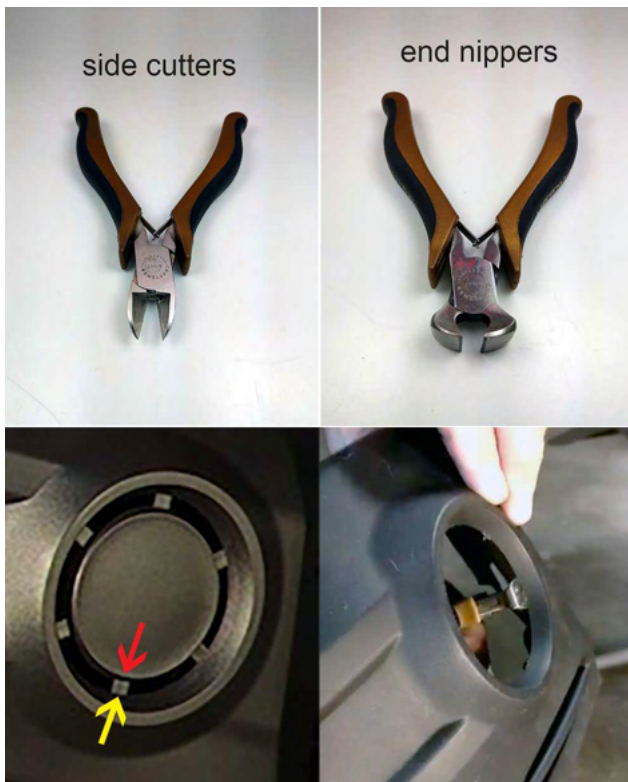
- phillips screwdriver
- 10mm wrench or socket x2
- 12mm wrench or socket
- side cutters
- end nippers
- 6mm allen wrench
- plastic pry bar
- towel.

Note: if you see this symbol (R), repeat that step on both sides.

1. Remove the 2 bolts shown. (R)



2. Disengage the yellow tabs from the red slots and remove cover. (R)

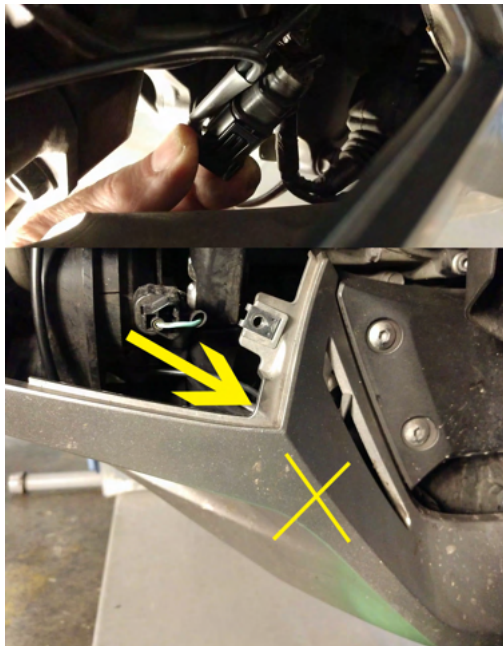


Note; the plastic on the cowl is a very soft material. If you apply pressure on it with a tool, it will turn white. Do not apply pressure to the material with your cutters until you are certain that you are in the correct position.

3. Remove the knockouts in your cowl. Use side cutters to cut the tabs at the yellow arrow and not the red arrow. Cut all 6 tabs. Once you have the center portion removed, use a set of end nippers from the rear of the cowl as shown in the lower right photo to remove any of the tab that remains on the cowl. (R)

4. Install the edge trim. We include a rubber edge trim to properly finish off the edge. First, use your side cutters to create a clean 90 degree edge on one end of the trim. Open the trim and press it into place starting at the top (the top is the least visible portion once the cowl is reinstalled). Work your way around the hole pressing the trim in place. The material does not require any glues or adhesive. Once you have installed the trim all the way around the edge, you will need to use your side cutters again to create the other end of the trim. We suggest that you cut it slightly longer than you think it will need to be and press the 2 ends against each other and then finish pressing the trim into place. You can always remove one end and trim it slightly shorter. Take your time as the trim will really finish out your installation. (R)

5. Locate the fog light connector. The connector is behind the lower cowl as shown by the yellow x. The top part of the picture shows the connector. This view is looking behind the lower cowl if you follow the yellow arrow.



6. There is a deadplug connected to the connector you need to plug into. Press the tab as shown by the yellow arrow and remove the deadplug. Once removed, plug your harness into the connector on the bike.



7. The short leg of the harness goes to the right light, and long to the left side.



8. To access the dash to install the switch, we have developed a shortcut that eliminates one hour of work. Please be careful and DO NOT pull hard on the plastic.

Pull up on the yellow arrows in the top portion of the picture. You will be removing the red tabs in the bottom picture from the slots shown by the yellow arrows. Once they are pulled up, they should not go back down by themselves. (R)



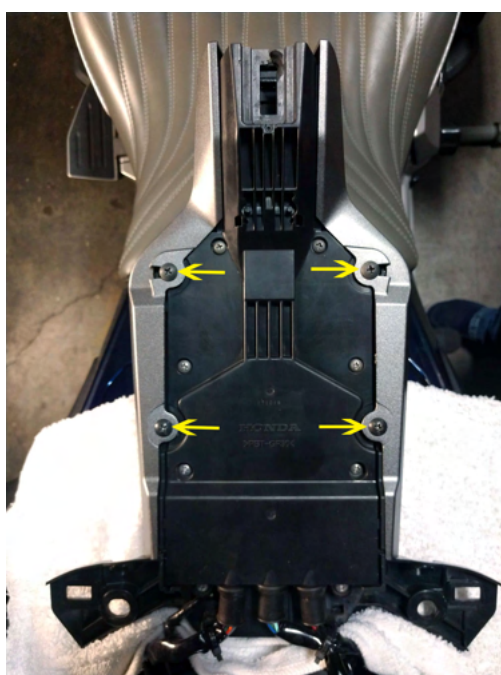
9. Use your 5mm allen wrench to remove the screw shown by the yellow arrow. You will have to remove the push pin shown by the red arrow. Pull on the center of the head until it pops up and then pull it out of its hole. (R)



10. This is the tab that is holding the switch panel in place at the front just under the dash. You must slide the entire switch panel forward, then lift upwards to release. Front and rear as shown in the picture references front and rear of the motorcycle.



11. Place a towel over the paint so that you can flip the panel backward and lay it down. Remove the 4 screws shown by the yellow arrows. Note the screws in the position that is most forward when installed are where the long screws go.



12. Place a plastic pry bar where shown and remove the silver trim from the dash. Use caution as there are several tabs along the top in addition to one large tab at the front.



13. Remove the 2 screws as shown by the yellow arrows below. Be sure to keep these screws separate from the ones removed in step 12.



14. Pull the tab forward as shown by the yellow arrow below. This will allow you to remove the emblem cover over the switch panel.



15. Remove the small phillips screw as shown by the yellow arrow. Once removed, pull up on the dummy switch plate and discard.



16. Insert your new switch button into the space from where you removed the dead switch. Note there are 3 guides for your new switch to slide into. It's optional to reinstall the screw as it's not needed. Turn key on and press switch. Lights should come on and green LED on right side of dash will illuminate.



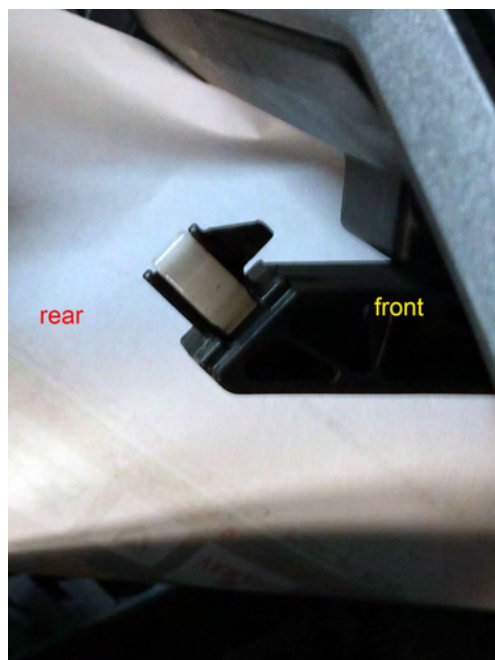
17. Reinstall the emblem plate by moving it into position. Snap the tab at the top and install the 2 screws shown by the yellow arrows.



18. Install the silver side trim. Start at the front and then work your way to the rear. Install the long screws into the holes that would be closest to the dash when in normal position.



19. Flip the switch panel back over and engage the front on the tab shown below. Slide the unit backward while holding up the painted bodywork in front of the pocket.



20. Install the allen head screws shown by the yellow arrow and the plastic push pins shown by the red arrow. You will probably have to put pressure on the black plastic part the push pin inserts into to align the holes.

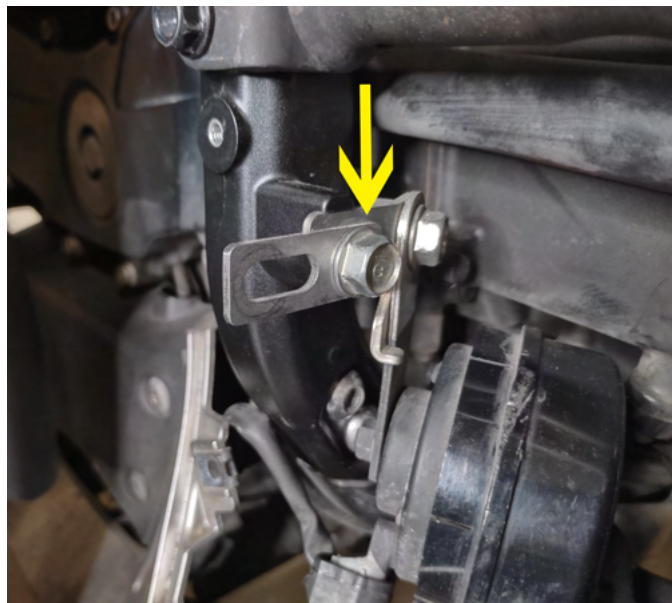


21. Align the tab shown by the red arrow and push the panel into the slot shown by the yellow arrow in the bottom picture. Check both points in the top picture where the yellow arrows are to insure the panels are flush.



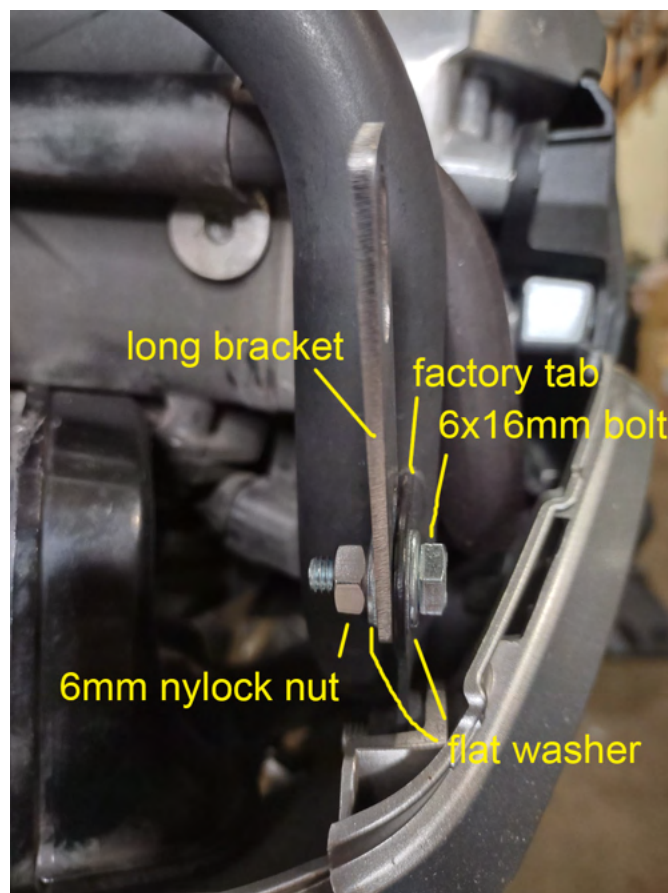
22. Install inside (short) bracket. (R)

Remove the horn mount bolt.
Install the short bracket using the bolt you removed
Use the round hole and not the slot.
Finger tighten to allow for movement.



23. Install the outside (long) bracket. (R)

Place a flat washer over the 16mm bolt.
Insert into the factory tab.
Place the long bracket on the bolt threads.
Place a flat washer on the bolt threads.
Place a 6mm nylon locknut on the bolt.
Tighten so that the bracket can be moved with light force.

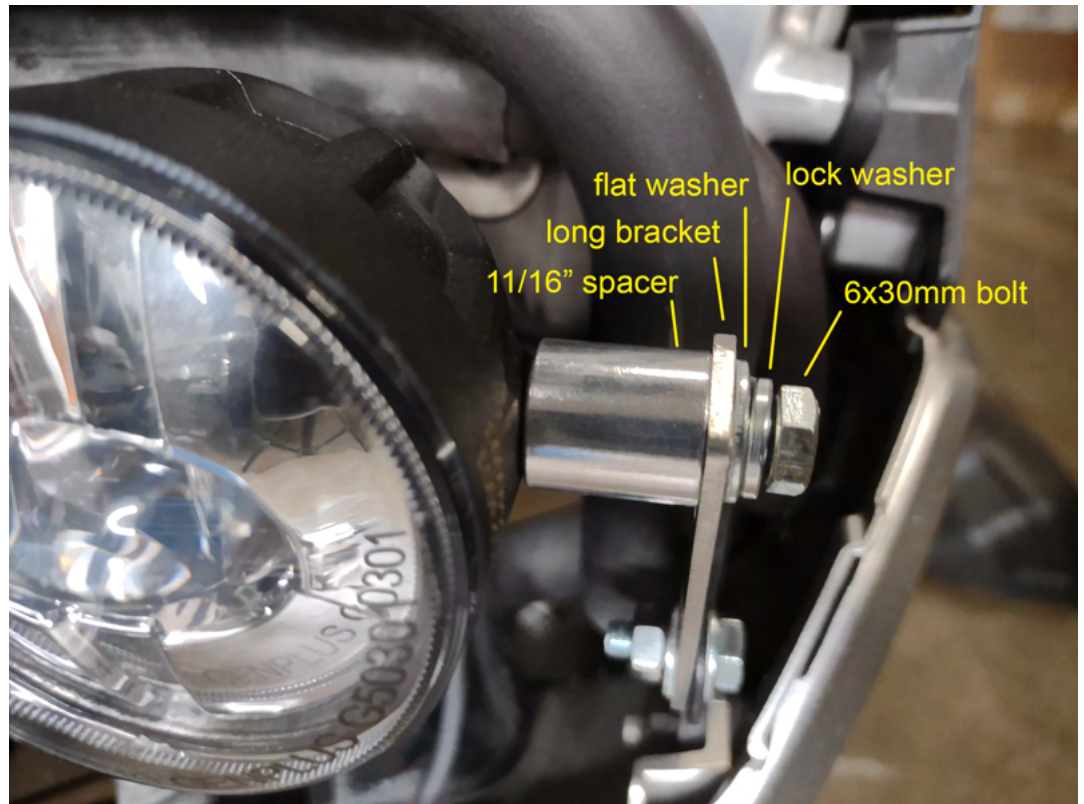


Note; the light is marked with the word "TOP" on the lens. Make sure it is positioned at the top.

24. Install outside hardware. (R)

Using the picture, add the hardware as shown.

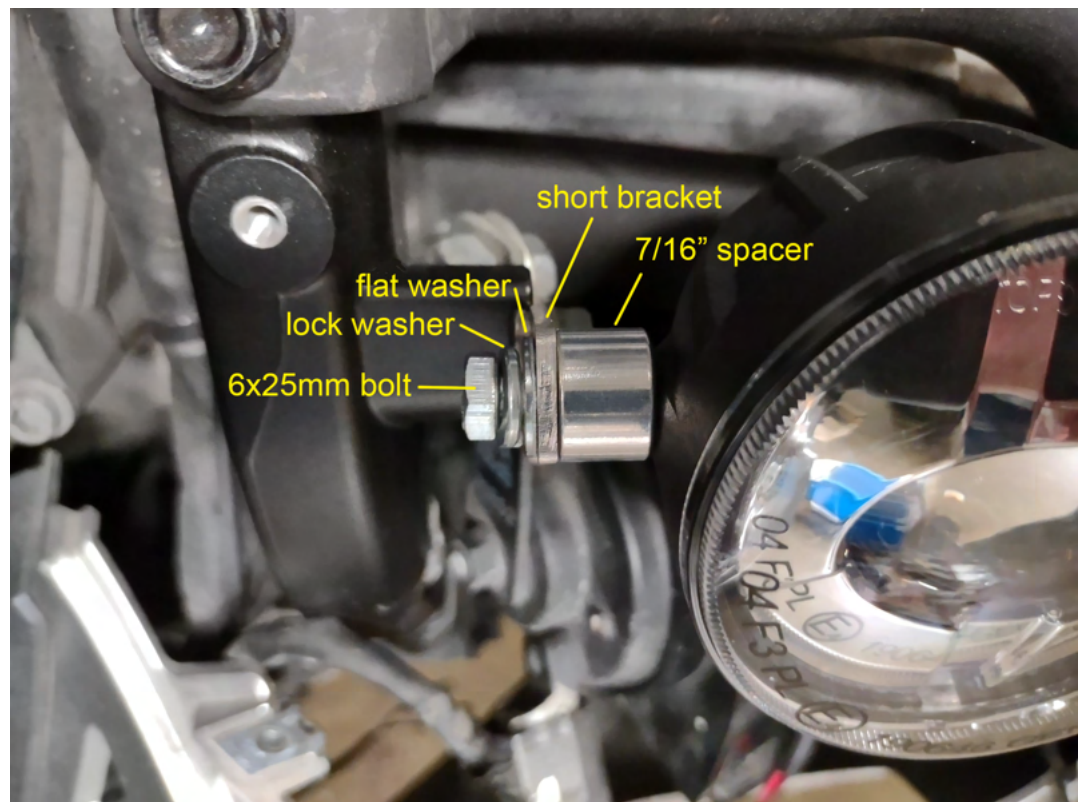
Finger tighten.



25. Install inside hardware. (R)

Using the picture, add the hardware as shown.

Finger tighten.



26. Overhead view of completed install. Left side shown.



27. Insert the tabs shown by the yellow arrows below into the slots shown by the red arrows. Start with lower tab first, then the upper.



28. Adjust the light to center the housing in the cowl light cutout.



29. Plug wires into harness. (R)
Connect red to red and black to black.

30. Aim lights. (R)

If possible, place your bike about 10' back from a wall or garage door. With the bike off the centerstand, aim the fog lights about halfway between the headlight lower point and the ground. Use this as a baseline and make additional adjustments as desired. Avoid aiming too high. Tighten all hardware at this time.

31. Complete installation. (R)

- a. check harness and light wires to make sure they are secure.
- b. check all hardware to make sure it is secure.
- c. secure the cowl by inserting & tightening the screws shown by the arrows.

