



## H7 LED Headlight System (Honda type)

This sheet must be read completely to:

1. Provide assistance/clarification to the installer, customer, end user or others.
2. Avoid causing injury or death to installer, customer, end user, or others.
3. Prevent damage to vehicle and/or accessory or other.

HEY YOU! Please, please, please read the instructions completely prior to installation. 90% of questions we receive could be answered simply by reading ALL the instructions before installing anything. If you have any question or problem during the installation, please contact us as necessary. Phone support will always provide the quickest response. Installation of this product implies your agreement with our sales, warranty, exchange and return policies found on our website.

You can thank the lawyers for this next bit of fun. With that said, lets go!

Installer: Pretty please, give this sheet to the customer after reading it.

It is virtually impossible for us to be able to address every possible situation an installer or user will encounter. This requires both to exercise due diligence and to apply some level of common sense. AKA...no 'hold my beer and watch this' type stuff.

Important Information in our instructions will be provided in the following manner:

SHOP TIP: literally great info we have gathered from hands-on installs or customer feedback.

NOTE: important information regarding the installation. Pay attention.

CAUTION: failure to follow instructions could result in damage to vehicle and/or accessory. Really pay attention.

WARNING: failure to follow instructions could result in injury/death of operator and/or passenger/others. For Pete's sake, PAY ATTENTION!

NOTE:

1. "Left", "Right", "Front" and "Rear" are described from the seated position of the vehicle. Vroom vroom.
2. Check local laws regarding the use of auxiliary lighting and electronics. Don't be 'that guy'.
3. Use of owners manual or service manual is recommended for installation. Sorry....more reading.
4. If so equipped, place motorcycle on it's centerstand on solid, level ground or engage parking brake. Do it like Mom is watching.

CAUTION:

1. When adding electrical accessories, always disconnect the battery and properly fuse new electronics.
2. DO NOT let the smoke out of the part. All electronics operate on smoke....when released, electronics are dead.

WARNING:

1. Allow the vehicle to cool prior to installation & when operating engine, allow adequate ventilation. Yep.
2. NEVER modify the kit in ANY manner. Doing so voids warranty and places all liability on the installer and/or user. Nope.
3. Never route wires or install components that interfere with the operation of the steering, suspension, brake/clutch/gas lever/pedal/grip or any other operational function of the vehicle. Duh.
4. Never allow your accessories to cause distractions to remove your focus off the vehicles operation. Never forget that this is a high risk sport - don't make it a higher risk when you don't have to. Major duh.
5. Never allow your accessories to cause distractions to others on the road. Super sized duh.

### Part Listing

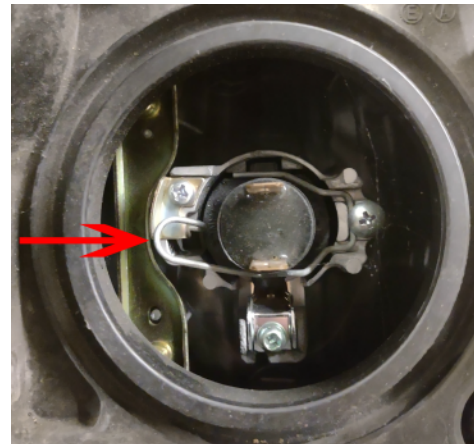
- 2 led array
- 2 power regulator module
- 2 billet aluminum spacer
- 4 o ring
- 1 adhesive prep kit
- 1 allen wrench..

### Tools / Supplies Required

.

1. Remove old bulb.

Unplug the connector from your headlight bulb. Remove the rubber boot. Locate the spring clip as shown in the picture. Push the clip in towards the front, push down, and then pull the spring out. The clip swivels on the right side where you see the phillips screw.



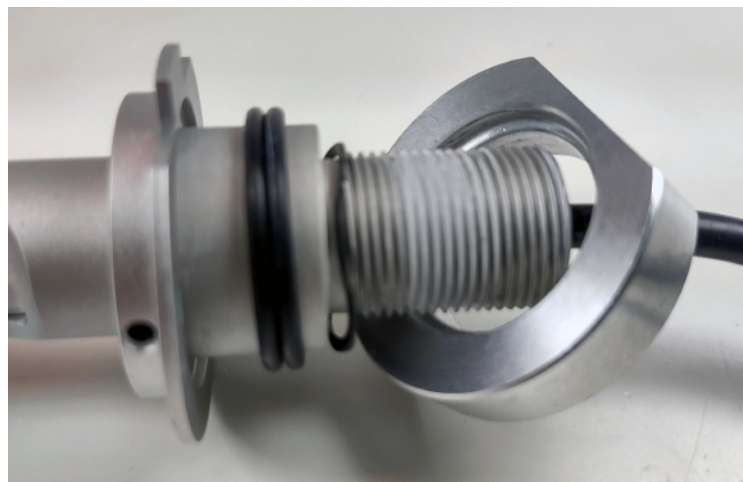
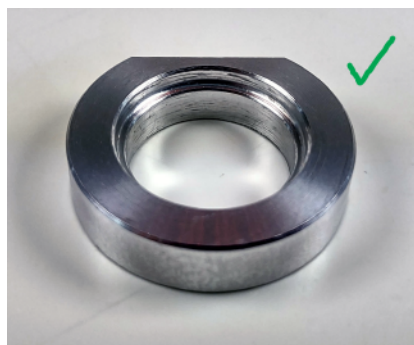
2. Prepare new bulb.

Unscrew the heat sink from the bulb. You may find it helpful to place a rag over the heatsink to grab it and not make it uncomfortable on your hand. Place 2 of the rubber o-rings included over the end of the bulb as shown in picture 2.



3. Install spacer.

Locate one of the 2 spacers include in your kit. If you look at both sides of the spacer, you will notice one side has a groove machined into the inner diameter hole. This is the side that will need to be inserted on to the bulb first. The o-rings you installed in the previous step will be forced into the groove and this will hold the spacer in place while you install the bulb. This spacer replaces the depth lost from the OEM bulb adapter.



4. Install led bulb into headlight.

Place the led array bulb into the headlight, with the tab at the 12 o'clock position. When installing in the high beam position, you may find it useful to hold the bulb by placing a long, flat tip screwdriver up against the spacer.



5. Secure bulb.

Clip the bulb and spacer into place in the reverse order from removal. Place the wire from the bulb into the hole in the rubber boot and snap the boot on the headlight. Reinstall the heatsink with the small end first. Tighten until you have medium resistance.

6. Connect power regulator module.

Look at the small, round connector on the power supply that matches the one on the bulb. The power regulator module has a groove on the connector. The bulb has a matching notch. Align these 2 and slide the connector together. Screw the retaining ring from the regulator to the bulb. Plug the power regulator module into the motorcycle.

7. Secure the power regulator module.

Depeding on the model year and any installed accessories, this will vary a little bit. Use the supplied prep kit to stick the modules to the bike following the instructions included with the prep kit.

Low beam; The ideal position is the space between the headlights, but most can be double sided taped to the plate directly under the headlight for the low beam position.  
High beam; place the module off to the side or secure to the inside fairing.

8. Connect power supply module.

The power supply has a 3 pin H4 connector which exactly matches your bike. Note the 3 pins and then insert them into the bike's headlight connector.

9. Final installation check.

Check that the power supply modules are well stuck in place.  
Check that none of the wiring interferes with the handlebar operation of the bike.  
Check that none of the wiring is rubbing against any moving components.

10. Test your new bulbs.

Turn on key and test your lights.  
If a light does not operate, check the connection to the bike.